

CONSTRUCTION PLANS FOR:
LEON COUNTY SOLID WASTE DIVISION
GUM ROAD TRANSFER STATION TIRE WASH

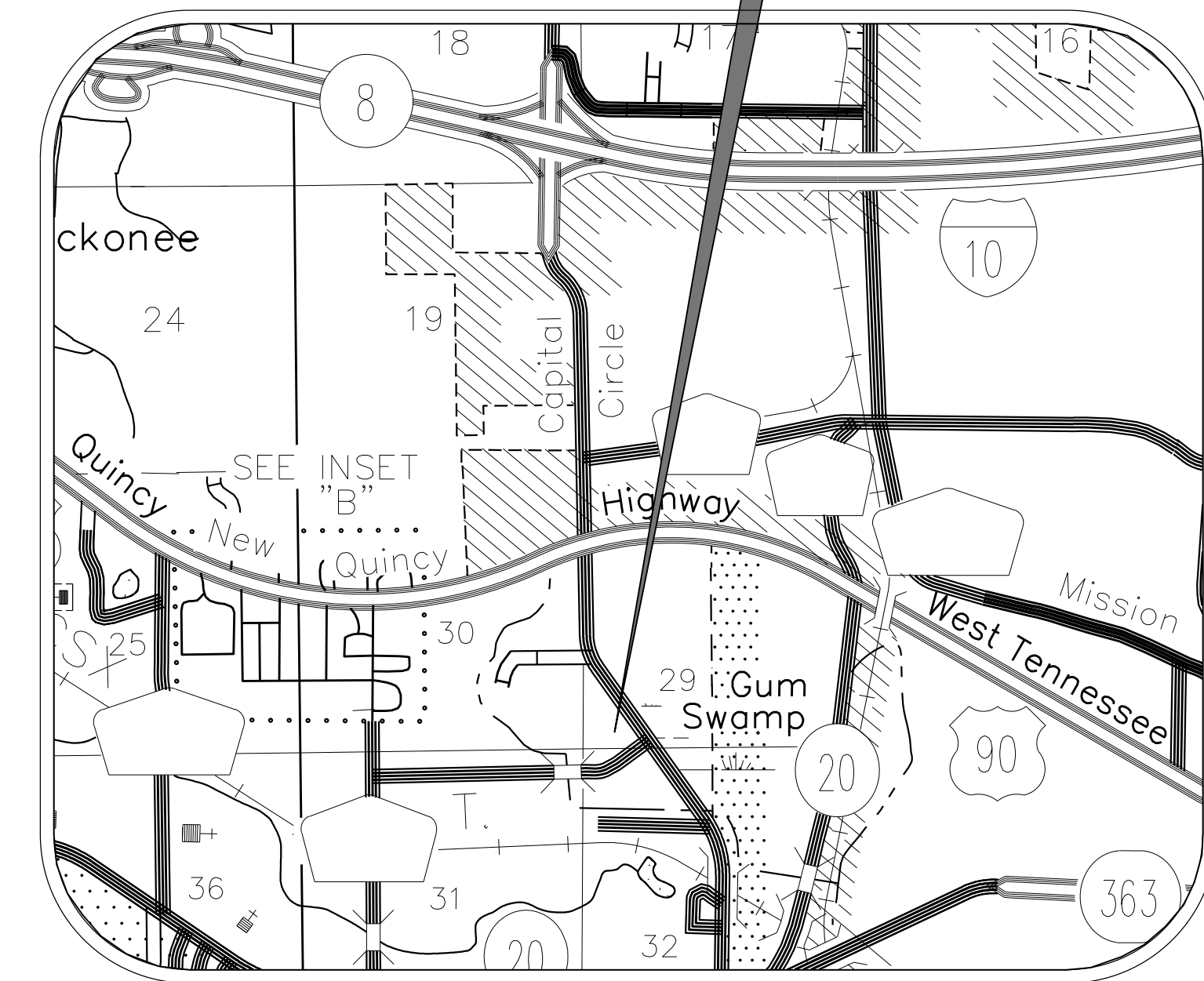
TALLAHASSEE, FLORIDA
SECTION 29, TOWNSHIP 1 NORTH, RANGE 1 WEST

I N D E X

- 1 LOCATION PLAN
- 2 DEMOLITION PLAN
- 3 SITE & GRADING PLAN
- 4 MISCELLANEOUS CONCRETE SLAB DETAILS
- 5 ELECTRICAL PLANS

PROJECT LOCATION

STREET ADDRESS
 COUNTY
 CITY, STATE, ZIP



VICINITY MAP

FINAL PLANS

8/15/12

ENGINEER: B. ALAN HART, P.E.

REG. NO. 58055

C.S.I. JOB NO. 9510.02



State law requires excavators to call 811 before digging per the Underground Facility Damage Prevention and Safety Act Chapter 666, Florida Statutes. Failure to call can result in fines from \$250 to \$5,000.



engineers | architects | surveyors | scientists

chastain
SKILLMAN

Design Office : 4705 Old Highway 37, P.O. Box 5710 Lakeland, Florida 33807-5710 (863) 646-1402
 Corporate Headquarters : 4705 Old Hwy 37, P.O. Box 5710, Lakeland, FL 33807-5710 (863) 646-1402

C.A. No. 262



22" x 34" SCALE 1"=100'
 11" x 17" SCALE 1"=200'

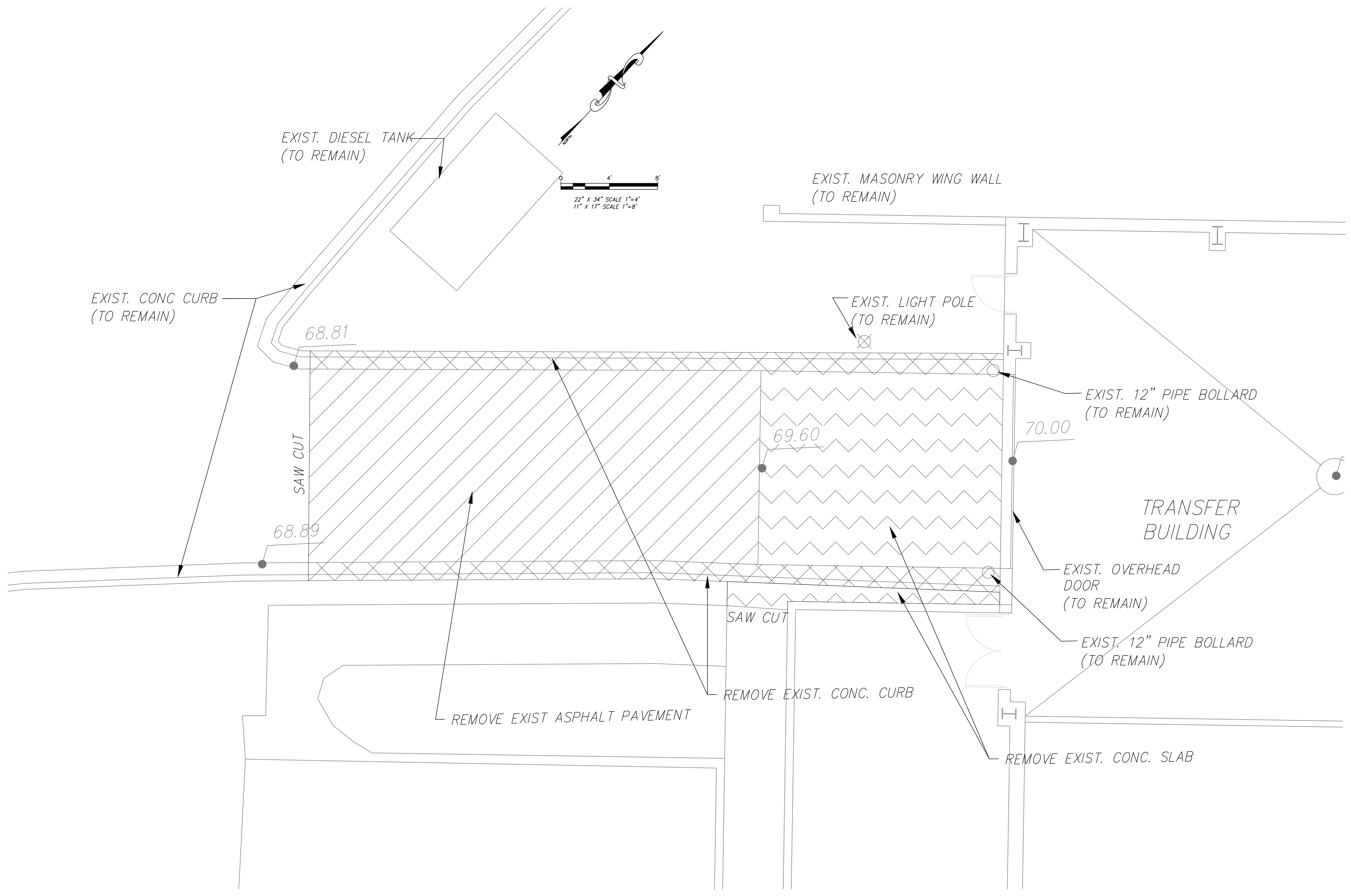


REVISION NO.	DATE	DESCRIPTION

REVISION DATE	8/15/12
PI	
RF	
DRAWN BY	NAME
REV.	DATE
P1	08/15/12
SCALE	1" = 100'

LEON COUNTY SOLID WASTE DIVISION
 CUM ROAD TRANSFER STATION
 SITE PLAN

© 2011 CHASTAIN
 SKILLMAN INC.
 ENGINEER:
 B. ALAN HART
 REG. NO. 58055
 DRAWING NO.
 9510.02 - 1



22" X 34" SCALE 1"=4'
11" X 17" SCALE 1"=8'

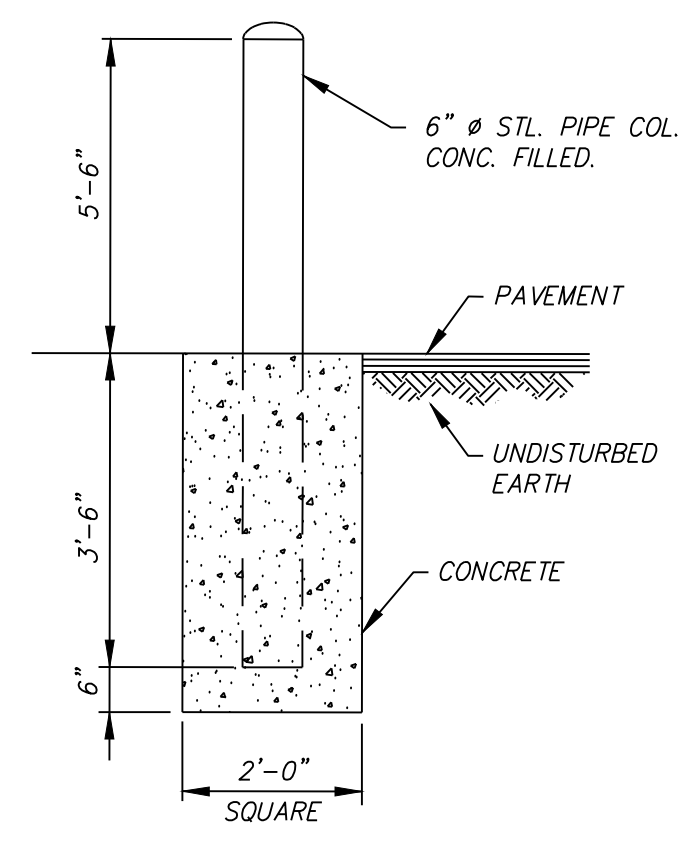
REVISION NO.	DATE	DESCRIPTION
P3	8/15/12	ISSUE FOR PERMIT
P2	8/7/12	100% PLANS SUBMITTAL
P1	6/XX/12	60% PLANS SUBMITTAL
RF		DESCRIPTION

REVISION NO.	DATE	DESCRIPTION
P3	8/15/12	ISSUE FOR PERMIT
P2	8/7/12	100% PLANS SUBMITTAL
P1	6/XX/12	60% PLANS SUBMITTAL
RF		DESCRIPTION

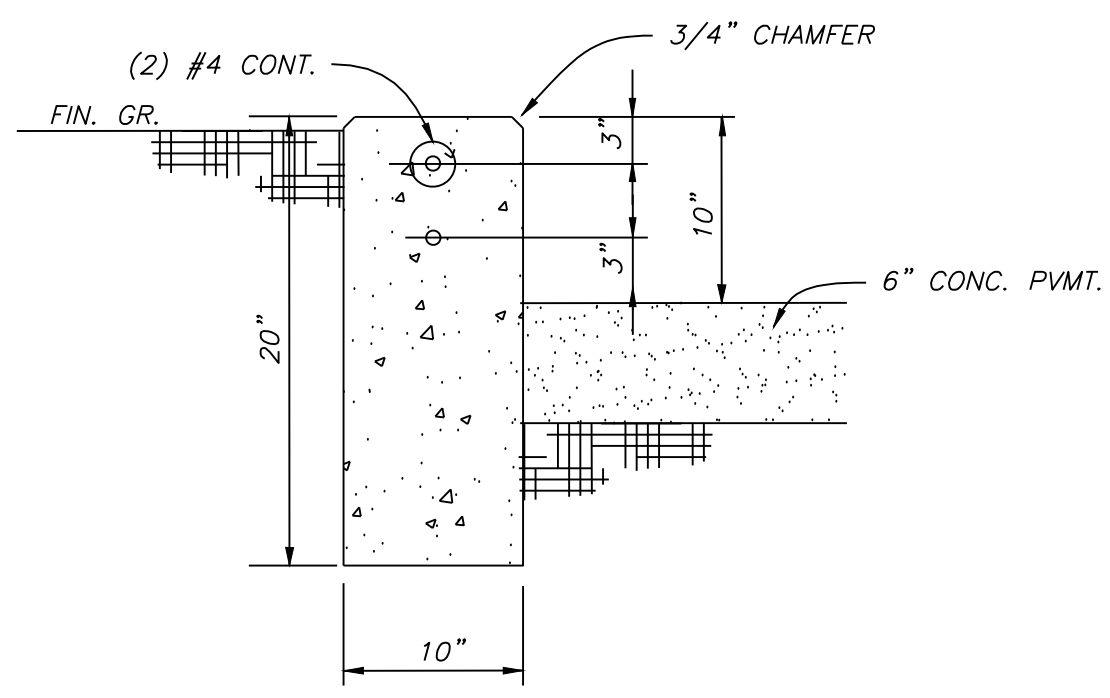
REV.	DATE
P-3	08/15/12
SCALE AS NOTED	

LEON COUNTY SOLID WASTE DIVISION
 CUM ROAD TRANSFER STATION
 DEMOLITION PLAN

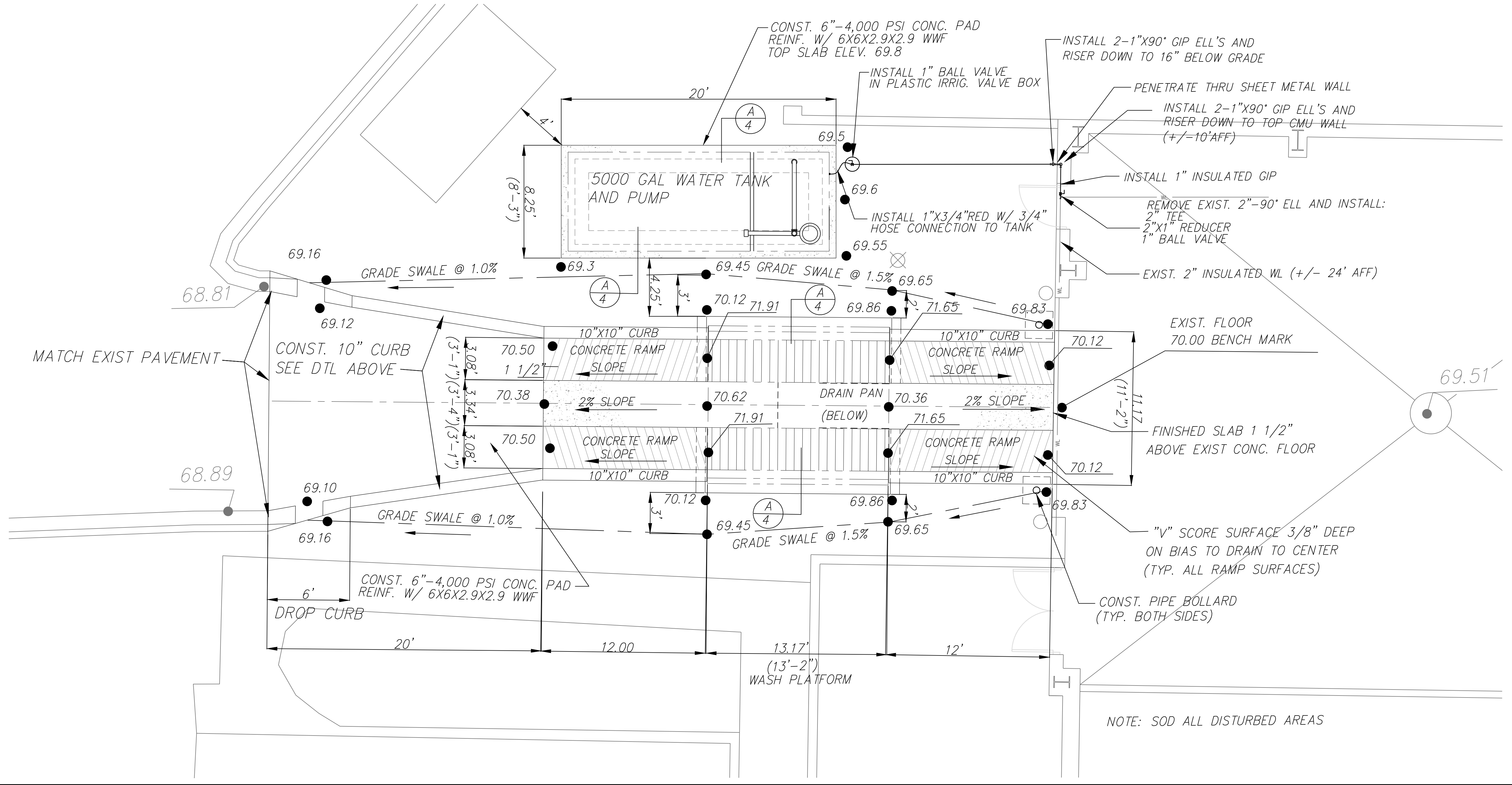
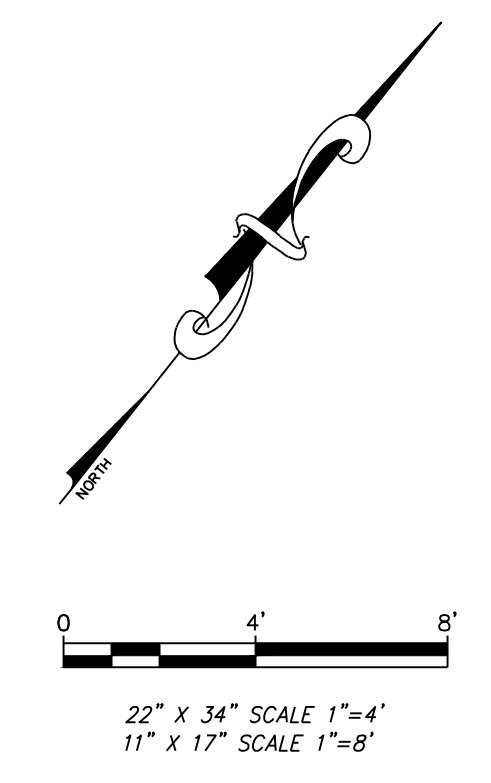
© 2011 CHASTAIN SKILLMAN INC.
 ENGINEER:
 B. ALAN HART
 REG. NO. 58055
 DRAWING NO.
 9510.02 - 2



PIPE BOLLARD DETAIL
N.T.S.



10" CURB DETAIL
N.T.S.



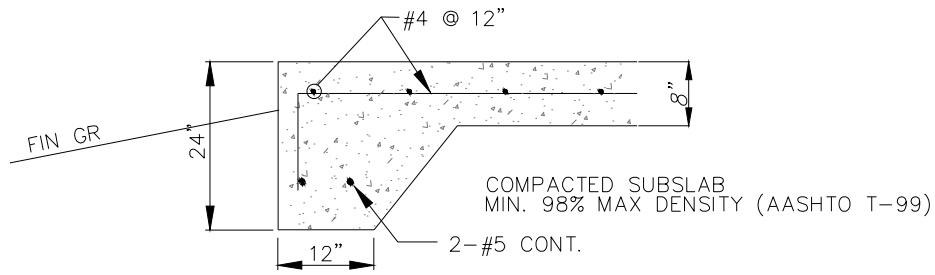
NOTE: SOD ALL DISTURBED AREAS

engineers | architects | surveyors | scientists

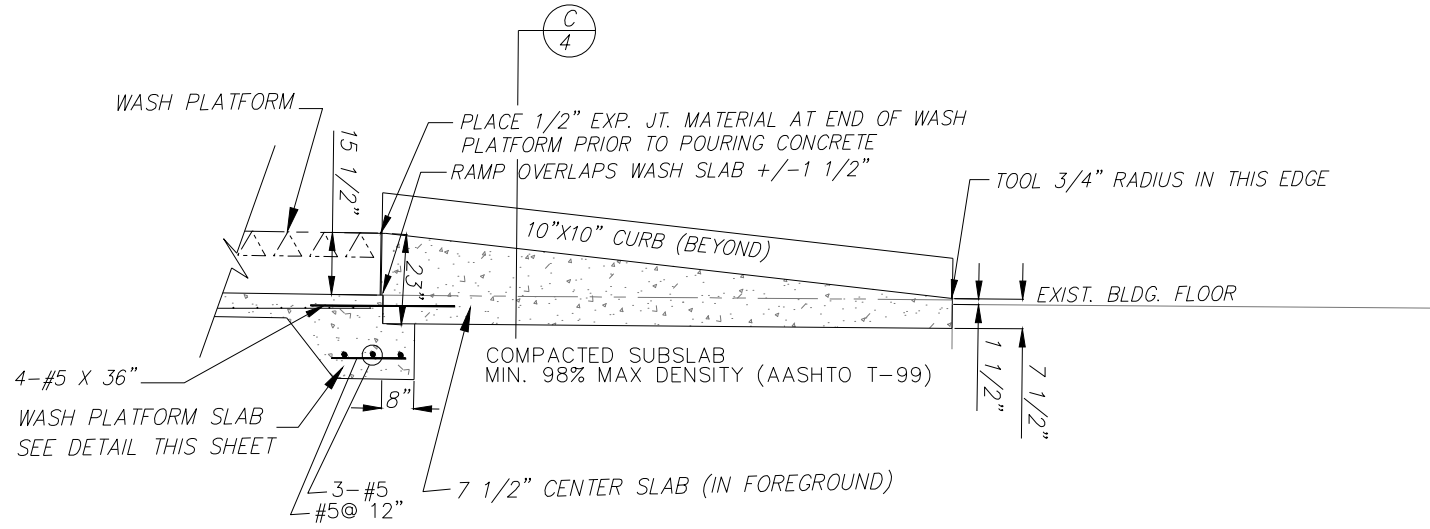
chastain SKILLMAN

Design Office: 4500 Old Highway 37, P.O. Box 2710, Columbia, SC 29202
 Copyright: 2011 Chastain Skillman, Inc. All Rights Reserved. C.A. No. 262

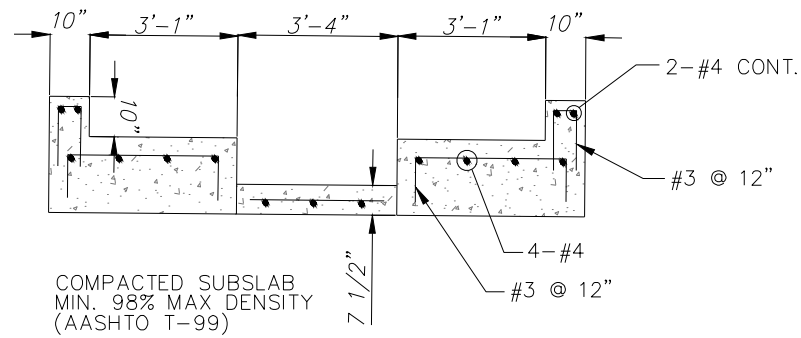
ISSUE FOR PERMIT	8/15/12
100% PLANS SUBMITTAL	8/17/12
60% PLANS SUBMITTAL	6/XX/12
DESCRIPTION	
REVISION NO.	
REV.	DATE
P-3	08/15/12
SCALE	1" = 40'
LBN COUNTY SOLID WASTE DIVISION GUM ROAD TRANSFER STATION	
SITE & GRADING PLAN	
© 2011 CHASTAIN SKILLMAN INC.	
ENGINEER: B. ALAN HART REG. NO. 58055	
DRAWING NO. 9510.02 - 3	



A
4 TANK - WASH PLATFORM SLAB BELL SECTION
 22" X 34" SCALE 1/2"=1'-0"
 11" X 17" SCALE 1/2"=1'-0"

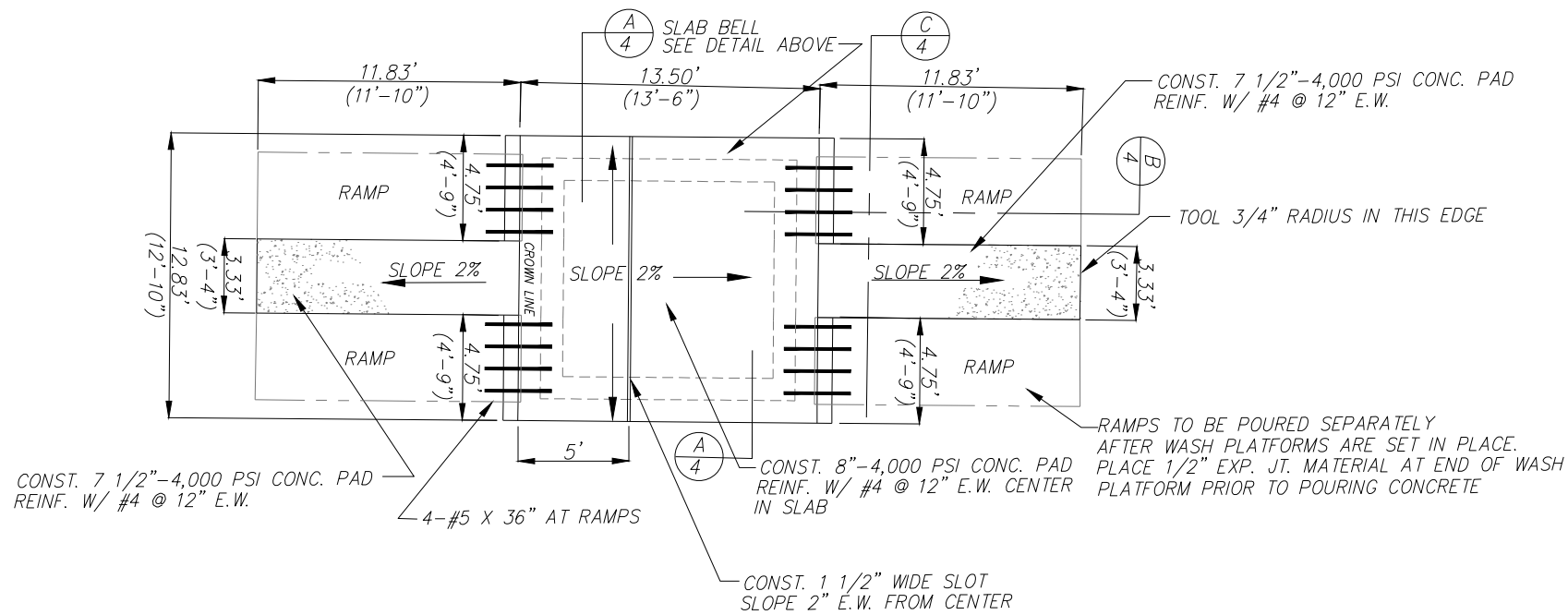


B
4 LONGITUDINAL RAMP SECTION
 22" X 34" SCALE 1/2"=1'-0"
 11" X 17" SCALE 1/4"=1'-0"



C
4 RAMP CROSS SECTION
 22" X 34" SCALE 1/2"=1'-0"
 11" X 17" SCALE 1/4"=1'-0"

NOTE: SEAL ALL CONSTRUCTION JOINTS NEW CONC. TO NEW CONC. AND NEW CONC. TO OLD CONC. WITH HYDROTITE CJ-0725-3K-ADH EXPANDABLE WATERSTOP AS MANUFACTURED BY GREENSTREAK, 3400 TREE COURT INDUSTRIAL BLVD., ST. LOUIS, MO.



WASH PLATFORM SLAB DETAIL
 22" X 34" SCALE 1/4"=1'-0"
 11" X 17" SCALE 1/8"=1'-0"

REVISION NO.	DATE	DESCRIPTION
1	8/7/12	100% PLANS SUBMITTAL
2	8/7/12	60% PLANS SUBMITTAL

REV.	DATE	BY
P-2	08/1/12	PI

SCALE	AS NOTED
-------	----------

LEON COUNTY SOLID WASTE DIVISION
 CUM ROAD TRANSFER STATION
 MISCELLANEOUS CONCRETE SLAB DETAILS

WINSLOW ENGINEERING GROUP, INC. thomas p# 22833
 208 SOUTH LAKE AVENUE
 LAKELAND, FLORIDA 33801
 (863) 682-1848 FAX (863) 686-4015
 twinslow@winsloweg.com
 CERTIFICATE OF AUTHORIZATION NUMBER 5430

ENGINEER:
 THOMAS WINSLOW
 REG. NO. 22833
 DRAWING NO.

ELECTRICAL SPECIFICATIONS

SECTION 16050 - BASIC ELECTRICAL MATERIALS AND METHODS

- ELECTRICAL COMPONENTS, DEVICES, AND ACCESSORIES: NEW, LISTED, AND LABELED AS DEFINED IN NFPA 70, ARTICLE 100, BY A TESTING AGENCY ACCEPTABLE TO AUTHORITIES HAVING JURISDICTION, AND MARKED FOR INTENDED USE.
- IDENTIFICATION DEVICE COLORS: USE THOSE PRESCRIBED BY ANSI A13.1, NFPA 70, AND THESE SPECIFICATIONS.
- COLOR ADHESIVE MARKING TAPE FOR RACEWAYS, WIRES, AND CABLES: SELF-ADHESIVE VINYL TAPE, NOT LESS THAN 1 INCH WIDE BY 3 MILS THICK (25 MM WIDE BY 0.08 MM THICK).
- TAPE MARKERS FOR CONDUCTORS: VINYL OR VINYL-CLOTH, SELF-ADHESIVE, WRAPAROUND TYPE WITH PREPRINTED NUMBERS AND LETTERS.
- ENGRAVED-PLASTIC LABELS, SIGNS, AND INSTRUCTION PLATES: ENGRAVING STOCK, MELAMINE PLASTIC LAMINATE PUNCHED OR DRILLED FOR MECHANICAL FASTENERS 1/16-INCH (1.6-MM) MINIMUM THICKNESS FOR SIGNS UP TO 20 SQ. IN. (129 SQ. CM) AND 1/8-INCH (3.2-MM) MINIMUM THICKNESS FOR LARGER SIZES. ENGRAVED LEGEND IN BLACK LETTERS ON WHITE BACKGROUND.
- COORDINATE NAMES, ABBREVIATIONS, COLORS, AND OTHER DESIGNATIONS USED FOR ELECTRICAL IDENTIFICATION WITH CORRESPONDING DESIGNATIONS INDICATED IN THE CONTRACT DOCUMENTS OR REQUIRED BY CODES AND STANDARDS. USE CONSISTENT DESIGNATIONS THROUGHOUT PROJECT.
- CUT, CHANNEL, CHASE, AND DRILL FLOORS, WALLS, PARTITIONS, CEILINGS, AND OTHER SURFACES REQUIRED TO PERMIT ELECTRICAL INSTALLATIONS. PERFORM CUTTING BY SKILLED MECHANICS OF TRADES INVOLVED. SLEEVE ALL CABLE PENETRATIONS OF WALLS. SEAL ALL CONDUIT PENETRATIONS.
- REPAIR, REFRESH AND TOUCH UP DISTURBED FINISH MATERIALS AND OTHER SURFACES TO MATCH ADJACENT UNDISTURBED SURFACES.
- ALL WORK SHALL COMPLY WITH NATIONAL ELECTRICAL CODE, 2008 ED., AND FLORIDA BUILDING CODE, 2010 ED.

SECTION 16060 - GROUNDING AND BONDING

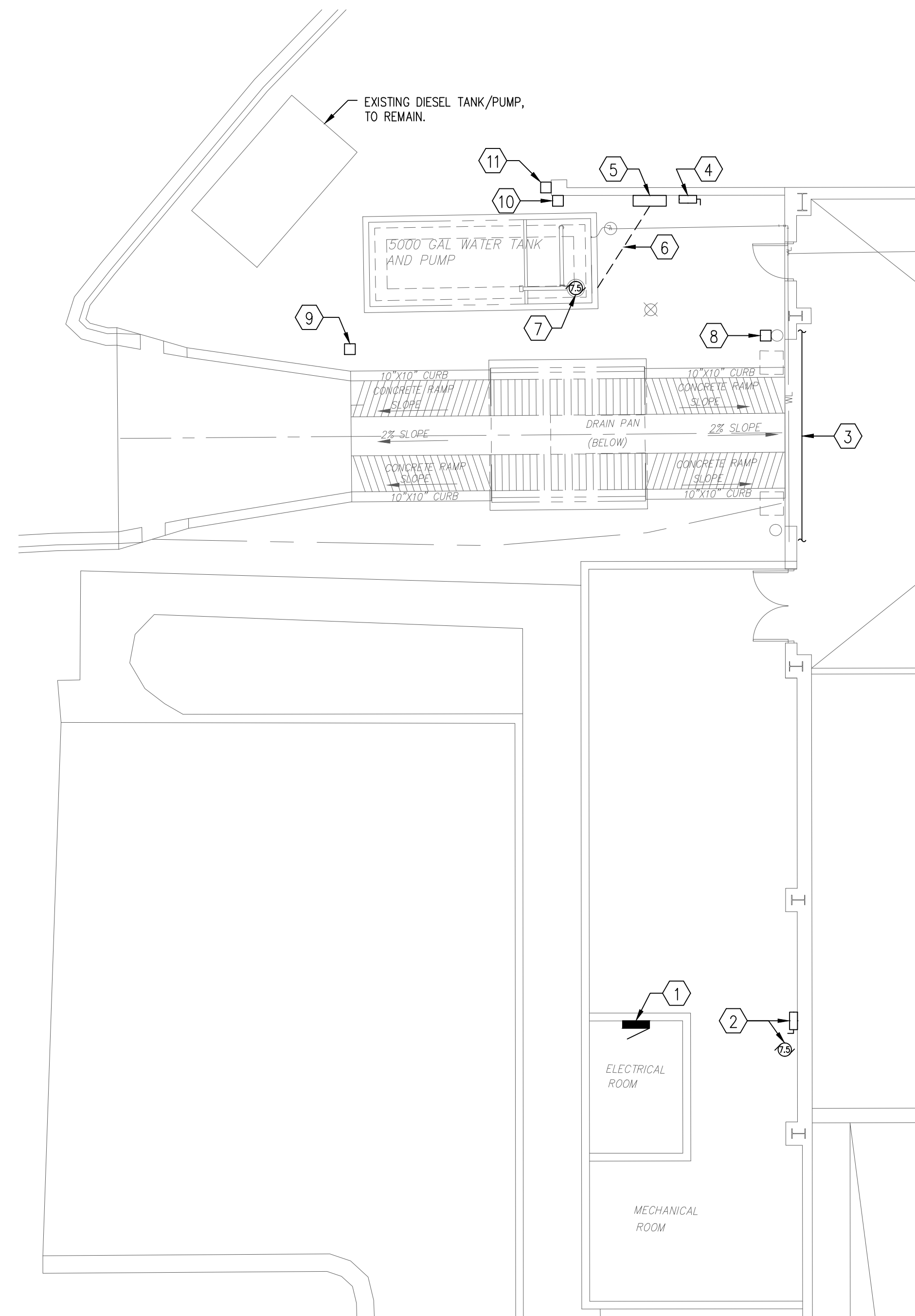
- EQUIPMENT GROUNDING CONDUCTORS: COMPLY WITH NFPA 70, ARTICLE 250, FOR TYPES, SIZES, AND QUANTITIES OF EQUIPMENT GROUNDING CONDUCTORS, UNLESS SPECIFIC TYPES, LARGER SIZES, OR MORE CONDUCTORS THAN REQUIRED BY NFPA 70 ARE INDICATED.
- INSTALL INSULATED EQUIPMENT GROUNDING CONDUCTORS IN ALL FEEDERS AND BRANCH CIRCUITS.
- ALL GROUNDING CONDUCTORS SHALL BE COPPER; COMPLY WITH DIVISION 16 SECTION "CONDUCTORS AND CABLES" AND ASTM B, AS APPLICABLE.
- EQUIPMENT GROUNDING CONDUCTORS: INSULATED WITH GREEN-COLORED INSULATION.
- UNDERGROUND CONDUCTORS: BARE, TINNED, STRANDED, UNLESS OTHERWISE INDICATED.
- CONNECTORS: COMPLY WITH IEEE 837 AND UL 467; LISTED FOR USE FOR SPECIFIC TYPES, SIZES, AND COMBINATIONS OF CONDUCTORS AND CONNECTED ITEMS.
- GROUNDING CONDUCTORS: ROUTE ALONG SHORTEST AND STRAIGHTEST PATHS POSSIBLE, UNLESS OTHERWISE INDICATED. AVOID OBSTRUCTING ACCESS OR PLACING CONDUCTORS WHERE THEY MAY BE SUBJECTED TO STRAIN, IMPACT, OR DAMAGE.
- BONDING STRAPS AND JUMPERS: INSTALL SO VIBRATION BY EQUIPMENT MOUNTED ON VIBRATION ISOLATION HANGERS OR SUPPORTS IS NOT TRANSMITTED TO RIGIDLY MOUNTED EQUIPMENT

SECTION 16120 - CONDUCTORS AND CABLES

- CONDUCTOR MATERIAL: COPPER COMPLYING WITH NEMA WC 5 OR 7; SOLID CONDUCTOR FOR NO. 10 AWG AND SMALLER, STRANDED FOR NO. 8 AWG AND LARGER.
- CONDUCTOR INSULATION TYPES: TYPE THHN-THWN COMPLYING WITH NEMA WC 5 OR 7.
- MULTICONDUCTOR CABLE: NOT PERMITTED FOR FEEDERS OR BRANCH CIRCUITS.
- SERVICE ENTRANCE, AND FEEDERS CONCEALED IN CONCRETE OR BELOW SLAB OR BELOW GRADE: TYPE THHN-THWN, SINGLE CONDUCTORS IN RACEWAY.
- EXPOSED FEEDERS AND FEEDERS CONCEALED IN WALLS OR CEILING: TYPE THHN-THWN, SINGLE CONDUCTORS IN RACEWAY.
- BRANCH CIRCUITS: TYPE THHN-THWN, SINGLE CONDUCTORS IN RACEWAY.
- CONCEAL CABLES AND RACEWAYS WHERE PRACTICAL.
- USE MANUFACTURER-APPROVED PULLING COMPOUND OR LUBRICANT WHERE NECESSARY; COMPOUND USED MUST NOT DETERIORATE CONDUCTOR OR INSULATION. DO NOT EXCEED MANUFACTURER'S RECOMMENDED MAXIMUM PULLING TENSIONS AND SIDEWALL PRESSURE VALUES.
- INSTALL EXPOSED CABLES PARALLEL AND PERPENDICULAR TO SURFACES OF EXPOSED STRUCTURAL MEMBERS, AND FOLLOW SURFACE CONTOURS WHERE POSSIBLE.
- MAKE SPLICES AND TAPS THAT ARE COMPATIBLE WITH CONDUCTOR MATERIAL AND THAT POSSESS EQUIVALENT OR BETTER MECHANICAL STRENGTH AND INSULATION RATINGS THAN UNSPLICED CONDUCTORS.
- WIRING AT OUTLETS: INSTALL CONDUCTOR AT EACH OUTLET, WITH AT LEAST 6 INCHES (150 MM) OF SLACK.

SECTION 16130 - RACEWAYS AND BOXES

- UNLESS OTHERWISE NOTED, PROVIDE NEMA 1 ENCLOSURES IN INDOOR LOCATIONS, NEMA 3R ENCLOSURES IN OUTDOOR LOCATIONS.
- MINIMUM RACEWAY SIZE: 3/4-INCH TRADE SIZE.
- APPLICATION: EMT MAY BE USED INDOORS, IN CONCEALED LOCATIONS. USE RSCG/IMC OUTDOORS AND IN EXPOSED LOCATIONS. RNC (SCHEDULE 40) MAY BE USED BELOW GRADE, ONLY.
- MAKE BENDS AND OFFSETS SO ID IS NOT REDUCED. KEEP LEGS OF BENDS IN SAME PLANE AND KEEP STRAIGHT LEGS OF OFFSETS PARALLEL, UNLESS OTHERWISE INDICATED.
- CONCEAL CONDUIT AND EMT WITHIN FINISHED WALLS, CEILINGS, AND FLOORS, WHERE PRACTICAL.
- INSTALL EXPOSED RACEWAYS PARALLEL OR AT RIGHT ANGLES TO NEARBY SURFACES OR STRUCTURAL MEMBERS AND FOLLOW SURFACE CONTOURS AS MUCH AS POSSIBLE.
- DO NOT EXCEED (4) 90-DEGREE BENDS BETWEEN J-BOXES OR PULL BOXES; PROVIDE ADDITIONAL J-BOXES OR PULL-BOXES AS REQUIRED.
- INSTALL RACEWAY SEALING FITTINGS AT SUITABLE, APPROVED, AND ACCESSIBLE LOCATIONS AND FILL THEM WITH UL-LISTED SEALING COMPOUND. INSTALL RACEWAY SEALING FITTINGS WHERE CONDUITS PASS FROM WARM TO COLD LOCATIONS, SUCH AS BOUNDARIES OF REFRIGERATED SPACES AND WHERE OTHERWISE REQUIRED BY NFPA 70.
- FLEXIBLE CONNECTIONS: USE MAXIMUM OF 72 INCHES (1830 MM) OF FLEXIBLE CONDUIT FOR EQUIPMENT SUBJECT TO VIBRATION, NOISE TRANSMISSION, OR MOVEMENT; AND FOR ALL MOTORS. USE LPMC IN DAMP OR WET LOCATIONS. INSTALL SEPARATE GROUND CONDUCTOR ACROSS FLEXIBLE CONNECTIONS.
- IN-GROUND JUNCTION BOXES AND/OR PULL BOXES SHALL BE "QUAZITE" OR APPROVED EQUAL, OPEN-BOTTOM WITH BOLT-DOWN COVER, RATED ANSI TIER-15.



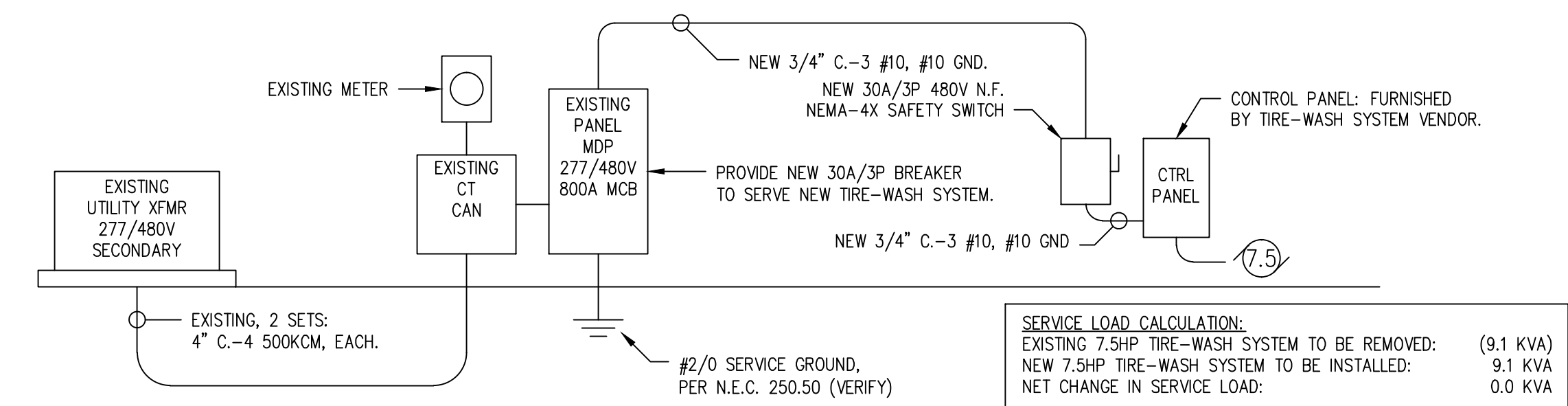
ELECTRICAL PLAN
SCALE: 1/8" = 1' - 0"

PANEL MDP SCHEDULE

(PANEL IS EXISTING; PROVIDE NEW BREAKER AS REQUIRED)

CKT	DESCRIPTION	TRIP	POLE	POLE	TRIP	DESCRIPTION	CKT
1	EXISTING LOAD	60	3	3	30	NEW TIRE-WASH *	2
3	-	-	-	-	-	-	4
5	-	-	-	-	-	-	6
7	PANEL H	200	3	3	200	ATS	8
9	-	-	-	-	-	-	10
11	-	-	-	-	-	-	12
13	XFMR	175	3	-	-	SPACE	14
15	-	-	-	-	-	-	16
17	-	-	-	-	-	-	18
19	XFMR	100	3	3	100	EXISTING LOAD	20
21	-	-	-	-	-	-	22
23	-	-	-	-	-	-	24

* PROVIDE NEW SIEMENS TYPE HED4 BREAKER TO SERVE NEW TIRE-WASH SYSTEM.



NOTE: ALL EQUIPMENT AND FEEDERS SHOWN ARE EXISTING, EXCEPT WHERE NOTED AS "NEW".

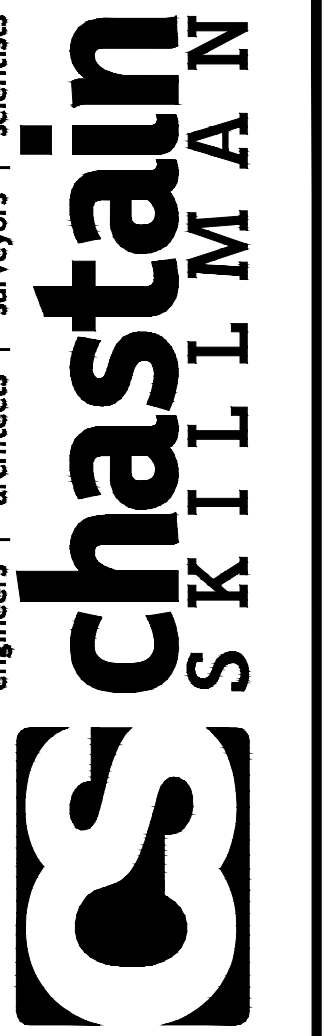
PARTIAL POWER RISER

NOT TO SCALE

SERVICE LOAD CALCULATION:
EXISTING 7.5HP TIRE-WASH SYSTEM TO BE REMOVED: (9.1 KVA)
NEW 7.5HP TIRE-WASH SYSTEM TO BE INSTALLED: 9.1 KVA
NET CHANGE IN SERVICE LOAD: 0.0 KVA

WORK NOTES:

- EXISTING PANEL MDP: PROVIDE NEW 30A/3P BREAKER TO SERVE NEW TIRE-WASH SYSTEM.
- EXISTING TIRE WASH SYSTEM PUMP (7.5HP) AND DISCONNECT SWITCH, TO BE REMOVED. REMOVE ALL RACEWAY AND WIRING, BACK TO PANEL.
- INSTALL NEW FEEDER, TO TIRE-WASH CONTROL PANEL, HIGH ABOVE VEHICLE DOOR.
- PROVIDE NEW 30A/3P 480V N.F. NEMA-4X SAFETY SWITCH AT CONTROL PANEL.
- NEW TIRE-WASH SYSTEM CONTROL PANEL.
- PROVIDE NEW UNDERGROUND 3/4" PVC-3 #10, #10 GND, TO TIRE-WASH SYSTEM PUMP.
- NEW TIRE-WASH SYSTEM PUMP (480V, 7.5HP).
- NEW TIRE-WASH SYSTEM ENTRY SENSOR. FIELD-COORDINATE EXACT LOCATION. PROVIDE 3/4" PVC BACK TO CONTROL PANEL, TO INSTALL SENSOR CABLING.
- NEW TIRE-WASH SYSTEM EXIT SENSOR. FIELD-COORDINATE EXACT LOCATION. PROVIDE 3/4" PVC BACK TO CONTROL PANEL, TO INSTALL SENSOR CABLING.
- EXISTING FUEL PUMP EMERGENCY SHUTOFF. RELOCATE PUSHBUTTON & SIGNAGE TO NEW LOCATION INDICATED (NOTE #11, BELOW). EXTEND RACEWAY AND CONDUCTORS AS REQUIRED.
- NEW LOCATION FOR FUEL PUMP EMERGENCY SHUTOFF. EXTEND RACEWAY AND CONDUCTORS AS REQUIRED.



REVISION	DESCRIPTION	DATE	BY
1	RELEASED FOR PERMIT	8/15/12	
2	100% REVIEW SUBMITTAL	7/20/12	

REVISION NO.	NAME	DATE
1		08/15/12

SCALE
AS NOTED

LEON COUNTY SOLID WASTE DIVISION
CUM ROAD TRANSFER STATION

ELECTRICAL PLAN

© 2011 CHASTAIN SKILLMAN INC.
ENGINEER: JAMES M. LAMB
REG. NO. 52688
DRAWING NO. 9510.02 - 5

APPLIED RESEARCH AND DESIGN, INC.
3998 BRADFORDVILLE ROAD, STE. B
TALLAHASSEE, FL, 32309
(850) 668-6324 -- FAX (850) 391-5486
FL CA#8948
JAMES M. LAMB, PE#52688